



### Unrivalled Thermal Comfort

Thermal comfort is a perfect balance of heat exchange between our body and the surrounding environment. Radiant technology enhances the feel of a uniform, natural temperature.



### Fast and Easy to Install

The Radiana ceiling tile system is installed directly to the existing ceiling suspension grid in much the same way as traditional ceiling tile systems.



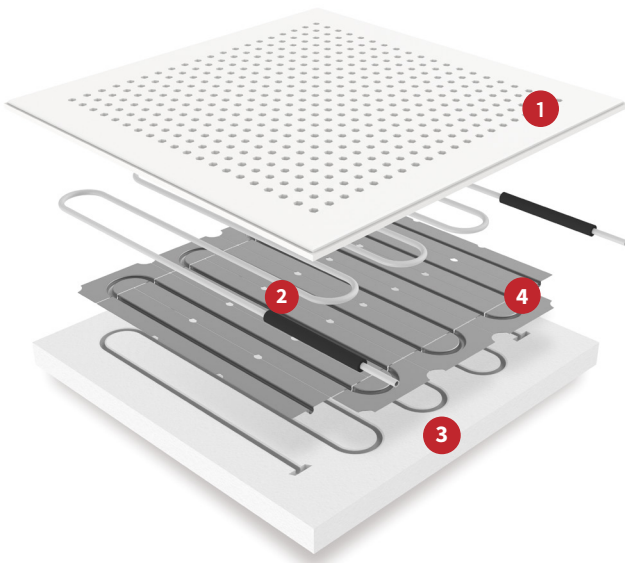
### Heating and Cooling

Radiana ceiling tiles can be used for heating and cooling and can be coupled with a vast range of heating/cooling sources, dependant on the specific application and your own preference.



### Optimise Acoustics

Radiana's adaptability to any gyptone ceiling tile allows you to tailor the acoustic performance of your ceiling system to directly suit your needs.



- 1** Gypsum finishing
- 2** 8mm (5/16") O.D. Dowlex PERT radiant tubing with EVOH oxygen barrier
- 3** 37.5mm EPS board ASTM E84 (Class A rated)
- 4** 0.3mm gauge aluminium heat transfer plates

The Radiana ceiling grid system is a **special suspended ceiling system** designed to regulate room temperatures using **radiant heating and cooling technology**.

Its **exceptional performance** and **customisability** make it **thermally and acoustically ideal** for a **wide range of applications**, from offices, schools and conference rooms to restaurants, hospitals and airports.

The system is **compatible with any gypsum tile from the gyptone range**. Without a significant loss of efficiency, **up to 64 tiles** can be connected in series directly to a manifold loop.

The tiles are simply **set into the existing ceiling suspension grid**, ensuring easy access during inspections. If needed, moving the tiles for maintenance of hydraulic connections is straightforward.

## Technical specification

|                               |  |                                  |            |
|-------------------------------|--|----------------------------------|------------|
| <b>Dimension</b>              | 600x 600mm   | <b>Max heating output</b>        | 222 w/m    |
| <b>Thickness</b>              | 52.5mm   | <b>Typical cooling output</b>    | 74 w/m     |
| <b>Weight (dry)</b>           | 12.84 kg/m <sup>2</sup>                                | <b>Max cooling output</b>        | 114 w/m    |
| <b>Water content</b>          | 2.27 litres (including supply & return backbone pipes) | <b>Effective radiant surface</b> | ~ 90%      |
| <b>Radiant tubing</b>         | PEX with oxygen barrier                                | <b>Operating temperature</b>     | 7°C - 60°C |
| <b>Diameter</b>               | 8 mm (~ 5/16") O.D. - 5.5 mm (~ 7/16") I.D.            | <b>Surface flame (ASTM E84)</b>  | Class A    |
| <b>Spacing between pipes</b>  | 79.3 mm  | <b>Flame spread index</b>        | 0          |
| <b>Typical heating output</b> | 88 w/m   | <b>Smoke developed index</b>     | 5          |