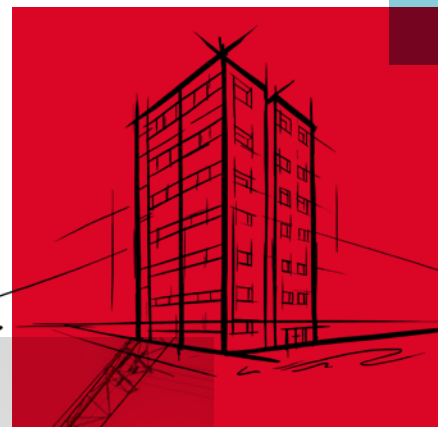


SP FIRESTOP VRB

Open-state cavity fire barrier for use within building facades



SP FIRESTOP VRB

Consisting of an intumescent strip fixed to high density non-combustible ROCKWOOL insulation, SP Firestop VRB is designed to form an open-state cavity barrier within the building facade.

This allows the product to maintain ventilation and drainage of the cavity under normal service conditions, while in the event of a fire the intumescent strip will quickly expand outwards to seal off the cavity, preventing the passage of fire and smoke.





Advantages

- Fully tested to “ASFP TGD 19: Fire resistance Test for ‘open-state’ cavity barriers used in the external envelope or fabric of buildings”
- Up to 60 minutes fire integrity and insulation
- Satisfies NHBC and CWCT guidance for ventilation gaps at fire barrier locations
- Weather resistant
- Easy site storage and handling
- Combined with ROCKWOOL RAINSCREEN DUO SLAB it simplifies the design of high rise buildings above 18m

Description

Specifically designed for use only in conjunction with ROCKWOOL RAINSCREEN DUO SLAB, SP Firestop VRB forms an open-state cavity fire barrier within the building facade, which allows for ventilation and drainage of the cavity under service conditions.

The product comprises of a stone wool barrier fixed to a continuous intumescent strip to its leading edge, encapsulated by a weather-resistant polythene sleeve.

Fully tested to ASFP TGD 19, the combination of non-combustible insulation with an effective intumescent supports the construction of safe façade systems and aids the design of high-rise buildings over 18m in height.

Installed horizontally and designed to ensure an appropriate open air space is maintained, the SP Firestop VRB is suitable for cavity widths up to 300mm.

Applications

SP Firestop VRB is suitable for use within ventilated façade systems.

Performance

Dimensions (mm)		Fire performance (min.)	
Overall void	Open cavity	Integrity	Insulation
≤300	≤25	60	60
≤300	26-35	30	30

- The barrier width must be a minimum of 25mm greater than the insulation thickness
- A 60-minute fire performance can be achieved with a maximum open cavity (between SP Firestop VRB and the outer cladding) of up to 25mm
- A 30-minute performance can be achieved with a maximum open cavity of up to 35mm

Technical information

Standards & approvals

Fully tested to ASFP TGD 19, SP Firestop VRB can comply with the following building regulations:

- England and Wales — Approved Document B
- Scotland—Technical Handbook Section 2
- Northern Ireland—Technical Booklet E
- Republic of Ireland—Technical Guidance Document B

Dimensions

Length: 1000mm

Thickness: 75mm

Width (mm)	Max. total cavity width for 60-minute fire rating (mm)
75	100
100	125
125	150
150	175
175	200
205	230
225	250
250	275

Ancillary Products

SP Fixing Brackets

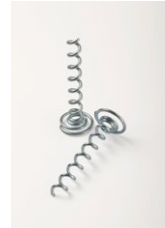
Required for installation, these brackets are supplied with SP Firestop VRB at a rate of two per metre length. Brackets are packaged in a separate cardboard box located within the main SP Firestop VRB packaging.

SP Fixing Brackets are designed to be easily re-profiled by hand on site, and should be cut as necessary to ensure they penetrate the barrier by at least 75% of its width.

Pigtail Screws

Once SP Firestop VRB is fixed onto the brackets, the front-facing intumescent strip is secured using pigtail screws. These are supplied at a rate of four per metre length of SP Firestop VRB and will be packaged with the SP Firestop Brackets.

Care should be taken to ensure that the pigtail screws protrude from the front face of the firestop by a maximum of 25mm.



Installation

Note that the polythene wrap covering each section of barrier is not to be removed.

SP Firestop VRB is supplied ready to install with two galvanised steel fixing brackets and four pigtail screws per meter length.

The brackets should be mechanically and securely fixed to the wall at a maximum of 500mm centres using non-combustible fixings.

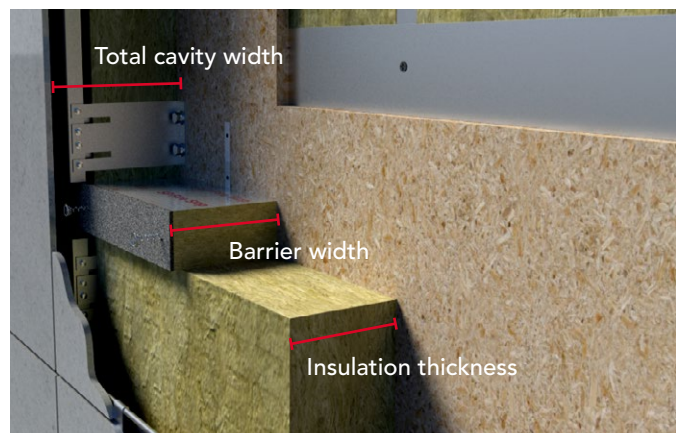
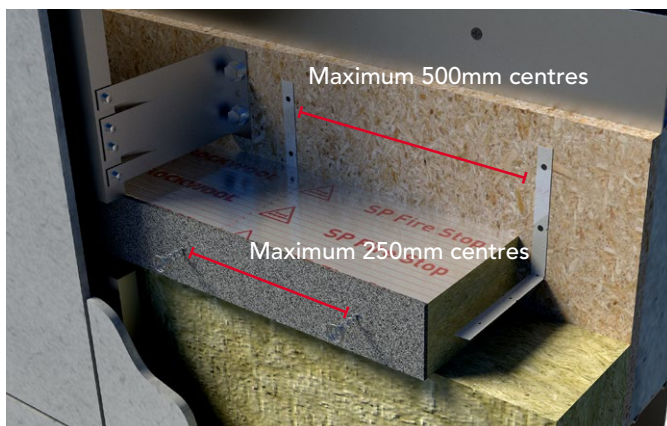
The product is impaled mid-barrier depth onto the fixing brackets, which should penetrate the barrier by approximately three-quarters of the product width. The barrier must be pushed back sufficiently to ensure full contact with the supporting wall.

The front-facing intumescent strip is secured to the barrier using the supplied pigtail screws, four per metre length at a maximum of 250mm centres. These screws should protrude from the front face of the barrier by a maximum of 25mm.

Adjacent lengths of barrier should be tightly butt jointed together.

For cut lengths, a minimum of two fixing brackets should be used.

Imperfections of up to 10mm can be filled with ROCKWOOL Acoustic Intumescent Sealant.



Sustainability

As an environmentally conscious company, ROCKWOOL promotes the sustainable production and use of insulation and is committed to a continuous process of environmental improvement.

All ROCKWOOL products provide outstanding thermal protection as well as four added benefits:



Fire resistance



Acoustic comfort



Sustainable materials



Durability

Health & Safety

The safety of ROCKWOOL stone wool is confirmed by current UK and Republic of Ireland health & safety regulations and EU directive 97/69/EC: ROCKWOOL fibres are not classified as a possible human carcinogen.

A Material Safety Data Sheet is available and can be downloaded from www.rockwool.co.uk to assist in the preparation of risk assessments, as required by the Control of Substances Hazardous to Health Regulations (COSHH).

Environment

Made from a renewable and plentiful naturally occurring resource, ROCKWOOL insulation saves fuel costs and energy in use and relies on trapped air for its thermal properties.

ROCKWOOL insulation does not contain (and has never contained) gases that have ozone depletion potential (ODP) or global warming potential (GWP).

ROCKWOOL is approximately 97% recyclable. For waste ROCKWOOL material that may be generated during installation or at end of life, we are happy to discuss the individual requirements of contractors and users considering returning these materials to our factory for recycling.



Interested?

For further information, contact the Technical Solutions Team on 01656 868490 or email technical.solutions@rockwool.co.uk

Visit www.rockwool.co.uk to view our complete range of products and services.

Copyright ROCKWOOL September 2018.

The ROCKWOOL Trademark

ROCKWOOL® - our trademark

The ROCKWOOL trademark was initially registered in Denmark as a logo mark back in 1936. In 1937, it was accompanied with a word mark registration; a registration which is now extended to more than 60 countries around the world.

The ROCKWOOL trademark is one of the largest assets in the ROCKWOOL Group, and thus well protected and defended by us throughout the world.

If you require permission to use the ROCKWOOL logo for your business, advertising or promotion. You must apply for a Trade Mark Usage Agreement. To apply, write to:
marketcom@rockwool.com.

Trademarks

The following are registered trademarks of the ROCKWOOL Group:

ROCKWOOL®

ROCKCLOSE®

RAINSSCREEN DUO SLAB®

HARDROCK®

ROCKFLOOR®

FLEXI®

BEAMCLAD®

FIREPRO®

Disclaimer

ROCKWOOL Limited reserves the right to alter or amend the specification of products without notice as our policy is one of constant improvement. The information contained in this brochure is believed to be correct at the date of publication. Whilst ROCKWOOL will endeavour to keep its publications up to date, readers will appreciate that between publications there may be pertinent changes in the law, or other developments affecting the accuracy of the information contained in this brochure. The applications referred to within the brochure do not necessarily represent an exhaustive list of applications. ROCKWOOL Limited does not accept responsibility for the consequences of using ROCKWOOL in applications different from those described within this brochure. Expert advice should be sought where such different applications are contemplated, or where the extent of any listed application is in doubt.

© ROCKWOOL 2018. All rights reserved.

Photography and Illustrations

The product illustrations are the property of ROCKWOOL Ltd and have been created for indicative purposes only.

Unless indicated below, the photography and illustrations used in this guide are the property of ROCKWOOL Limited. We reserve all rights to the usage of these images.

If you require permission to use ROCKWOOL images, you must apply for a Usage Agreement. To apply, write to:
marketcom@rockwool.com.

September 2018

ROCKWOOL Limited

Pencoed
Bridgend
CF35 6NY

Tel: 01656 862 621

info@rockwool.co.uk

rockwool.co.uk

