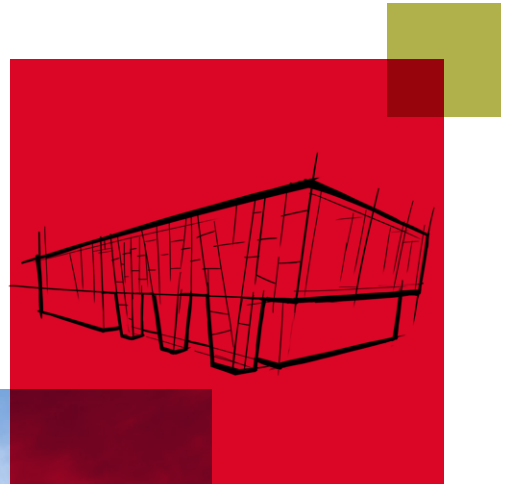


HARDROCK[®] **MULTI-FIX** **RECOVERY BOARD**

Secures a strong bond between membrane and insulation on flat roof refurbishment projects.



HARDROCK® MULTI-FIX RECOVERY BOARD

Specifically developed for use on flat roof refurbishment projects, HARDROCK® Multi-Fix Recovery Board is compatible with all commonly used flat roof membranes including; Single-ply, EPDM, bitumen membranes and liquid membrane systems.

HARDROCK® Multi-Fix Recovery Board is ideal for both domestic and commercial refurbishment, in addition to up-stand details, and can be installed directly over the in-situ roof membrane easily handling any minor imperfections on the existing external finish.





Advantages

- Can be installed directly over the in-situ roof membrane
- Will accommodate minor imperfections on the existing external finish
- Can be adhesively applied or mechanically fixed
- Excellent heat resistance, ideal for torch applied bitumen systems
- A single solution that is compatible with most roof coverings
- Reduces external noise ingress
- CE Marked

Description

HARDROCK® Multi-Fix Recovery Board has been specifically developed for use on flat roof refurbishment projects.

HARDROCK® Multi-Fix Recovery Board is manufactured with an integral mineral coated glass fibre fleece, which for adhered membranes, secures a strong bond between membrane and insulation whilst limiting the amount of adhesive required.

HARDROCK® Multi-Fix Recovery Board is compatible with all commonly used flat roof membranes including:

- Single-Ply & EPDM
- Bitumen membranes
- Liquid membrane systems

Applications

HARDROCK® Multi-Fix Recovery Board is suited to:

- Domestic refurbishment
- Commercial refurbishment
- Up stand details

HARDROCK® Multi-Fix Recovery Boards are completely fire safe and can be used to provide an effective acoustic barrier to external noise pollution.

Performance

Product performance

Thermal conductivity	0.039 W/mK
Fire classification	Euroclass A1

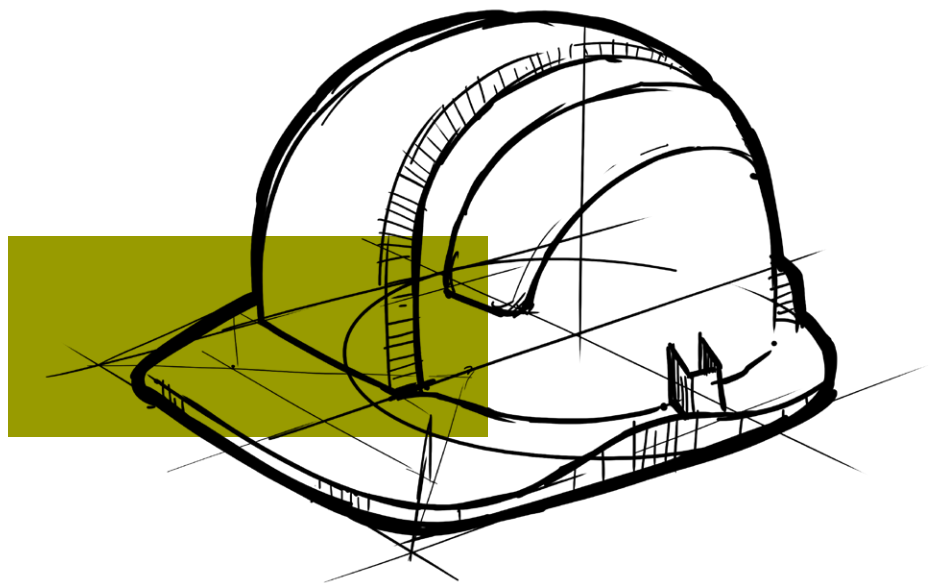
*40mm board will be subject to minimum order quantities

Acoustic performance

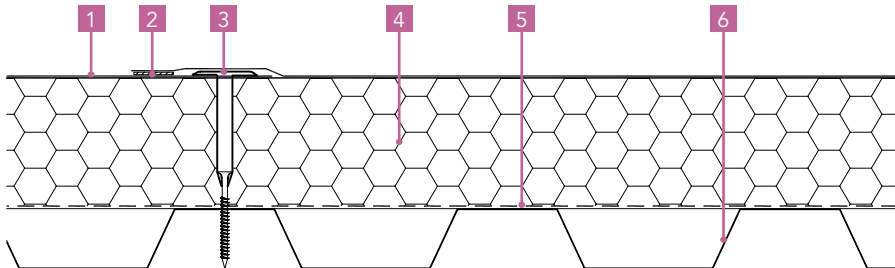
When tested in accordance with BS EN ISO 10140-2:2010 HARDROCK® Multi-Fix Recovery Board has proven that it can improve the acoustic performance of a typical flat roof system by up to 25%. When installed above a typical warm flat roof system consisting of 100mm PIR onto a 0.7mm profiled steel deck, the airborne sound reduction performance was increased from *Rw 28dB to **Rw 35dB.

When tested as an individual 30mm layer within a single ply flat roof system, onto a 0.7mm profiled steel deck, the system performance achieved ***Rw 33 dB.

HARDROCK® Multi-Fix Recovery Board is the ideal solution for flat roof refurbishment on schools and supports the current acoustic refurbishment standards as listed in Table 1 of the Building Bulletin 93 document, "Acoustic Design of Schools: Performance Standards."

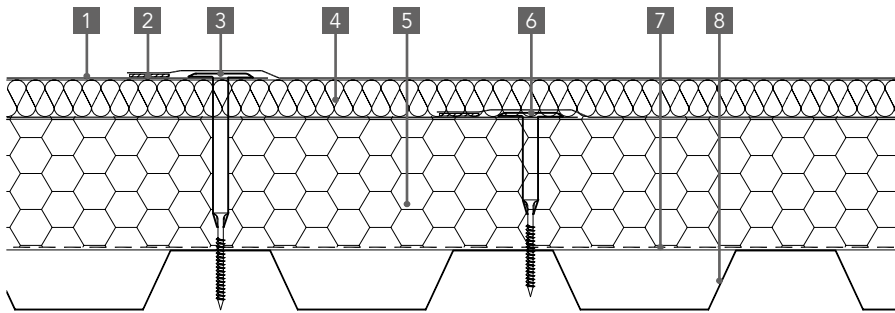


*Test Report – C/23008/T02 Test No. 3



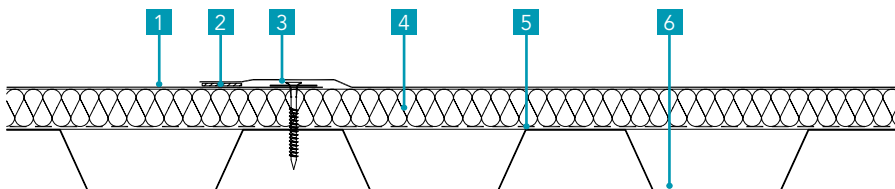
1. 1.2mm gauge single ply membrane - mechanically fixed
2. Hot air weld
3. Mechanical fixing for metal deck - screw and stress plate
4. 100mm PIR insulation board
5. 0.25mm self adhered VCL
6. Tata D60 roof deck

**Test Report - C/23008/T02 Test No. 4



1. 1.2mm gauge single ply membrane - mechanically fixed
2. Hot air weld
3. Mechanical fixing for metal deck - screw and stress plate
4. 30mm HARDROCK® Multi-Fix Board
5. Existing single ply membrane - mechanically fixed
6. 100mm PIR insulation board
7. 0.25mm self adhered VCL
8. Tata D60 roof deck

***Test Report – C/23008/T02 Test No. 2



1. 1.2mm gauge single ply membrane - mechanically fixed
2. Hot air weld
3. Mechanical fixing for metal deck - screw and stress plate
4. 30mm HARDROCK® Multi-Fix Board
5. 0.25mm self adhered VCL
6. Tata D60 roof deck

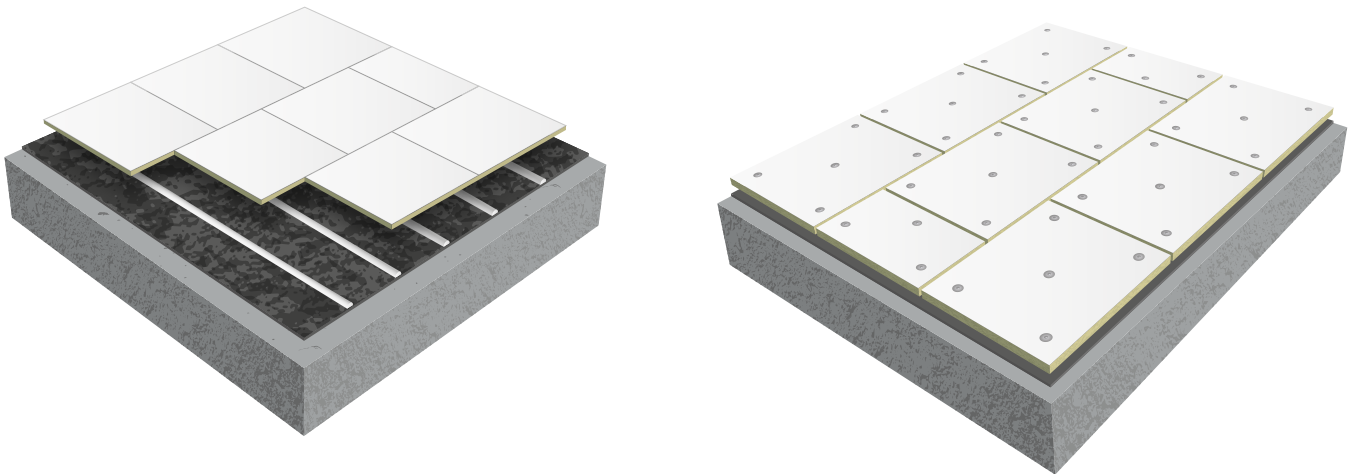
Installation

Warm roofs and cold ventilated roofs

HARDROCK® Multi-Fix Recovery Board has been specifically developed for use on flat roof refurbishment projects.

- Remove any loose debris.
- Mechanically fix or bond HARDROCK® Multi-Fix Recovery Board through/to the existing roofing membrane and/or insulation, into the roof deck, always ensuring that the existing deck is in a reasonable condition. A compatible adhesive must be used for bonding the insulation to the existing surfaces.
- 4N° fixings per m² are required (5N° per board) for all bonded and torch applied membranes (see recommended installation section containing fixing pattern, below).
- For all applications the boards should be laid in a staggered pattern with the mineral fleece facing upwards.
- Apply the new membrane to HARDROCK® Multi-Fix Recovery Board (see fixing guidelines overleaf).
- The existing cross ventilation of cold roof systems must always be maintained.

Recommended installation



ROCKWOOL recommend the use of a plastic tube washer, or stress plate support thread when mechanically fastening roof boards to metal, concrete or timber deck warm roof systems. A stress plate and fastener fixings are required for ventilated timber deck cold roof systems.

Membrane types & fixing guidelines

HARDROCK® Multi-Fix Recovery Boards are compatible with mechanically fixed, bonded and torch applied flat roof membrane systems.

Torch applied bituminous membranes

With its exceptional heat resistance HARDROCK® Multi-Fix Recovery Board is the ideal choice for torch and hot bitumen applications. It has been designed for use with fully bonded, torch applied multi-layer bituminous systems.

When applying the bitumen membrane always torch with minimum heat. Torch the roll of waterproofing felt using appropriate flame/edge guards at all times.

Torch applied bituminous membranes should always be installed in accordance with the membrane manufacturers' guidelines.



Liquid membranes

Cold liquid applied membranes offer a seamless watertight finish and are ideal for roof refurbishment, roof details and roof repairs. HARDROCK® Multi-Fix Recovery Board is designed for use with a number of liquid applied membranes.

In addition to the installation procedures quoted in the fixing guidelines section, all board joints must be taped prior to the application of the liquid membrane system.

Fully/partially adhered single-ply, EPDM

HARDROCK® Multi-Fix Recovery Board can be used with fully or partially adhered single-ply and EPDM membranes. The fleece facing of the board secures a strong bond between membrane and insulation whilst limiting the amount of adhesive needed.

A single-ply/EPDM membrane which has been tested and deemed compatible for bonding to HARDROCK® Multi-Fix Recovery Board is to be applied to the insulation with the relevant adhesive.

Where the membrane is fully bonded to the insulation surface, advice and guidance must be sought by the membrane manufacturer on suitable coverage rates.



Sustainability

As an environmentally conscious company, ROCKWOOL promotes the sustainable production and use of insulation and is committed to a continuous process of environmental improvement.

All ROCKWOOL products provide outstanding thermal protection as well as four added benefits:



Fire resistance



Acoustic comfort



Sustainable materials



Durability

Health & Safety

The safety of ROCKWOOL stone wool is confirmed by current UK and Republic of Ireland health & safety regulations and EU directive 97/69/EC: ROCKWOOL fibres are not classified as a possible human carcinogen.

A Material Safety Data Sheet is available and can be downloaded from www.rockwool.co.uk to assist in the preparation of risk assessments, as required by the Control of Substances Hazardous to Health Regulations (COSHH).

Environment

Made from a renewable and plentiful naturally occurring resource, ROCKWOOL insulation saves fuel costs and energy in use and relies on trapped air for its thermal properties.

ROCKWOOL insulation does not contain (and has never contained) gases that have ozone depletion potential (ODP) or global warming potential (GWP).

ROCKWOOL is approximately 97% recyclable. For waste ROCKWOOL material that may be generated during installation or at end of life, we are happy to discuss the individual requirements of contractors and users considering returning these materials to our factory for recycling.



Interested?

For further information, contact the Technical Solutions Team on 01656 868490 or email technical.solutions@rockwool.co.uk
Visit www.rockwool.co.uk to view our complete range of products and services.

Copyright ROCKWOOL September 2018.

The ROCKWOOL Trademark

ROCKWOOL® - our trademark

The ROCKWOOL trademark was initially registered in Denmark as a logo mark back in 1936. In 1937, it was accompanied with a word mark registration; a registration which is now extended to more than 60 countries around the world.

The ROCKWOOL trademark is one of the largest assets in the ROCKWOOL Group, and thus well protected and defended by us throughout the world.

If you require permission to use the ROCKWOOL logo for your business, advertising or promotion. You must apply for a Trade Mark Usage Agreement. To apply, write to:
marketcom@rockwool.com.

Trademarks

The following are registered trademarks of the ROCKWOOL Group:

ROCKWOOL®

ROCKCLOSE®

RAINSSCREEN DUO SLAB®

HARDROCK®

ROCKFLOOR®

FLEXI®

BEAMCLAD®

FIREPRO®

Disclaimer

ROCKWOOL Limited reserves the right to alter or amend the specification of products without notice as our policy is one of constant improvement. The information contained in this brochure is believed to be correct at the date of publication. Whilst ROCKWOOL will endeavour to keep its publications up to date, readers will appreciate that between publications there may be pertinent changes in the law, or other developments affecting the accuracy of the information contained in this brochure. The applications referred to within the brochure do not necessarily represent an exhaustive list of applications. ROCKWOOL Limited does not accept responsibility for the consequences of using ROCKWOOL in applications different from those described within this brochure. Expert advice should be sought where such different applications are contemplated, or where the extent of any listed application is in doubt.

© ROCKWOOL 2018. All rights reserved.

Photography and Illustrations

The product illustrations are the property of ROCKWOOL Ltd and have been created for indicative purposes only.

Unless indicated below, the photography and illustrations used in this guide are the property of ROCKWOOL Limited. We reserve all rights to the usage of these images.

If you require permission to use ROCKWOOL images, you must apply for a Usage Agreement. To apply, write to:
marketcom@rockwool.com.

Notes

Notes

September 2018

ROCKWOOL Limited

Pencoed
Bridgend
CF35 6NY

Tel: 01656 862 621

info@rockwool.co.uk

rockwool.co.uk

