



# SIDERISE CVB acoustic void barriers for suspended ceilings & raised access floors

A semi-rigid composite sheet that reduces sound transmission between rooms, designed for free-standing in both ceiling and raised access floor voids.

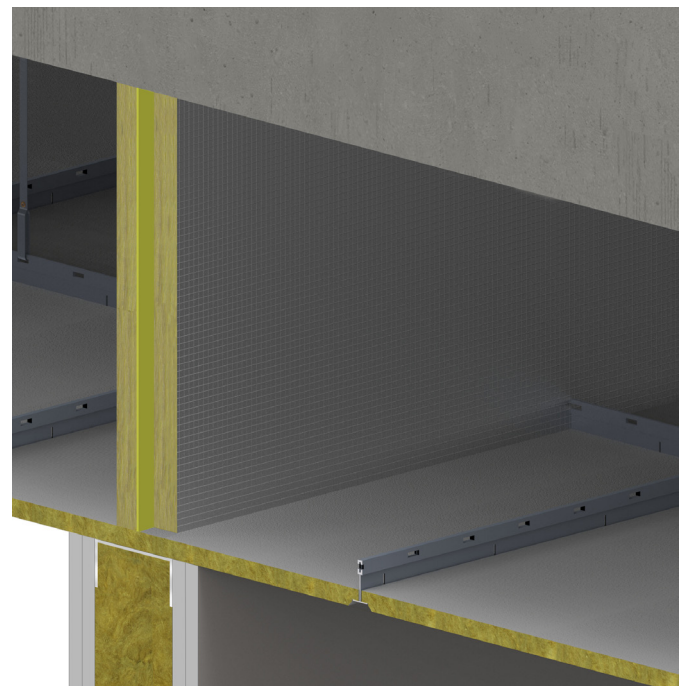
## Application

**SIDERISE CVB acoustic void barriers** are primarily intended to reduce sound transmission via hidden voids offering potential 'cross-talk' paths to adjoining areas. For suspended ceiling or raised access floors, typical voids include those formed at partition lines and the cavity formed at floor slab abutments to curtain walls.

The product comprises a high-density resin bonded rockfibre insulation core with exposed faces finished in a Class 'O' reinforced aluminium foil. As standard it incorporates opposing interlocking rebate joints in one direction. This feature helps maintain acoustic integrity at joints within the installed barrier.

**SIDERISE CVB** is available in a number of grades and thicknesses that offer a wide range of sound reduction values. The product is also available with a choice of optional high mass central membranes to achieve substantially higher Sound Reduction Index (SRI) values. (Contact our Interiors technical team for advice.)

Some **SIDERISE CVB barriers** have certified fire resistance permitting their dual use as ceiling or floor void fire barriers. The product is extremely simple to fix and can be easily cut to accommodate service penetrations.



## Benefits

### CVB/LAM

- Acoustic performance ( $R_w$ ): 23 - 25dB
- $D_{ncw}$  up to 45dB
- Fire performance: 30 - 60 minutes

### CVB/P

- Acoustic performance ( $R_w$ ): 28 - 31dB
- $D_{ncw}$  up to 55dB

## Product description

The rockfibre insulation core of **SIDERISE CVB acoustic void barriers for suspended ceilings** is available in a range of densities and in two different structural forms:

**SFO** - the conventional construction (i.e. the direction of the internal fibres predominantly aligns with that of the barrier itself).

**HSL** - the special 'lamella' construction (i.e. the internal fibres have a perpendicular orientation and additionally are held in a pre-compressed state).

The advantage of the HSL construction is that it offers improved acoustic performance at lower surface weights. Additionally the HSL version is more compressible in the plane of the barrier, assisting friction fitting and aiding deformation around service penetrations.

The SFO form is also optionally available with the inclusion of a central limp heavy membrane. Two surface weights of the polymeric membrane are available: P5 (5kg/m<sup>2</sup>) or P10 (10kg/m<sup>2</sup>).

The product is faced as standard on the exposed surfaces with a reinforced aluminium foil. Alternative facings for special conditions are available, e.g. coloured or matt black finishes. **SIDERISE CVB** can also be supplied without the standard rebated edge joints if required.

**Table 1 - Barrier grades**

Product Code	Type	Thickness (mm)	Kg/m <sup>2</sup>	R <sub>w</sub> (dB)
CVB/75LAM/90R	HSL	90	7.1	23
CVB/75LAM/120R	HSL	120	9.4	25
CVB/100/100R	SFO	100	10	19
CVB/140/100R	SFO	100	14	21
CVB/80/P5/100R	SFO + P5	103	13	28*
CVB/80/P10/100R	SFO + P10	105	18	31*
CVB/80/P10/100R + CB10P	Twin barrier	250 o/a	29	49

NOTE: \* Assessed value

## Acoustic performance

Frequently the sound separation achieved between adjoining rooms or offices is severely limited by 'cross-talk' via a common void. This occurs when the transmission loss associated with this sound path is less than that provided by the primary separating element (e.g. partition or floor).

Typical situations include:

- Suspended ceiling voids at partitions
- Access floor voids below partitions
- Cavities at floor slab edges to façades

The inclusion of **SIDERISE CVB** can normally remedy this problem for all of these conditions.

For common voids above or below partitions it is usual to install the CVB barrier directly in line with the partition (see Fig 1).

The Sound Reduction Index (SRI) of **SIDERISE CVB** is not normally required to equal that of the partition itself. This is due to the presence of other obstructions in the room-to-room sound path (e.g. the raised access floor or suspended ceiling).

The individual performance of the barrier need only be sufficient to correct the shortfall between the partition and the untreated cross-talk path.

The actual value of these paths can vary substantially. For suspended ceiling voids 15-40dB ( $D_{ncw}$ ) would be usual, whereas values of 38-42dB ( $D_{ntw}$ ) would be associated with most raised access floor systems.

With knowledge of either the existing overall path value or details of the individual path obstructing elements, an acoustic engineer can assess a minimum SRI value for the CVB acoustic barrier. Our Interiors technical team can also offer assistance in this area.

Occasionally conditions arise that demand substantially higher SRI values of the CVB acoustic barrier. Examples include: ceiling voids formed by open-cell or substantially perforated suspended ceilings; supply air floor plenums or voids at floor abutments to curtain walls. Twin barrier or multiple element arrangements can then be employed to accommodate almost all possible sound performance criteria.

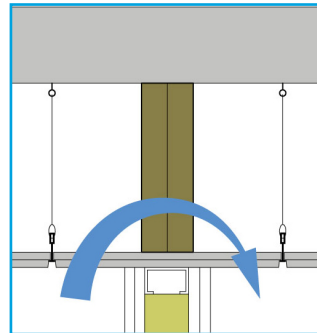


Fig 1. Sound Transmission Path

### SOUND REDUCTION INDEX (SRI)

Table 1 - Barrier grades indicates weighted sound reduction index values ( $R_w$ ) for a range of **SIDERISE CVB acoustic void barriers**.

Twin barrier constructions have been tested to provide up to 49dB( $R_w$ ). Also double arrangements combined with a **SIDERISE fire stop** have achieved 51dB( $R_w$ ).

All values are for the barrier arrangement alone. Room-to-room performance would therefore normally be significantly higher.

## Ceiling voids

In this application **SIDERISE CVB** is normally installed by means of a compression fit between the structural soffit and the lower suspended ceiling (or partition head where this projects into the void). The product is cut oversize then friction fitted into its final position (see Fig 2).

In addition to simple friction fitting, **SIDERISE CVB** may also be mechanically retained. This would normally apply for larger void heights or for any other condition where it is considered prudent, e.g. when significant ceiling/floor deflections are possible. In these circumstances barrier retention can be achieved using **SIDERISE support brackets**.

Alternatively, the head of the product may be securely retained by the installation of metal angle sections to each side (see Fig 3).

Where the barrier abuts a suspended ceiling with projecting grid elements, improved sealing can be effected by cutting corresponding slits into the lower edge of the product. These cuts assist in allowing the barrier to deform snugly around the grid component whilst still maintaining a tight compression fit to the rear of the ceiling tile.

Service penetrations are generally best accommodated by cutting the barrier horizontally on the service's centre line or at a perimeter edge. The product is then hand profiled to create a corresponding cut out to the service cross-section. It is essential that both the cut out and cut line are then tightly abutted. Cut joints and the vertical interlocking joints should be sealed on both sides with a 50mm (min.) self-adhesive foil tape.

**SIDERISE CVB** is generally limited to a maximum void height of 1200mm. **SIDERISE** offers other products suitable for larger void heights (e.g. **CBX Barrier**).

Generally a single **SIDERISE CVB** acoustic void barrier, in combination with the room-to-room sound transmission loss offered by the suspended ceiling, is adequate. However, a twin barrier arrangement can be employed for conditions where a low performance contribution can be expected from the suspended ceiling, e.g. an open cell construction or the presence of significant light or diffuser penetrations (see Fig 4).

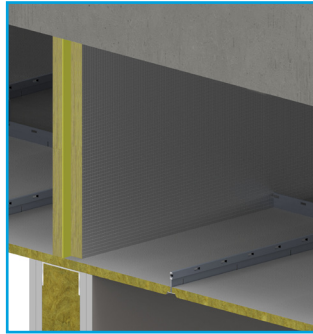


Fig 2. Friction fit in a low height void

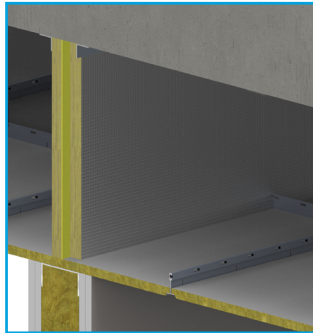


Fig 3. Head fixing with twin angle sections

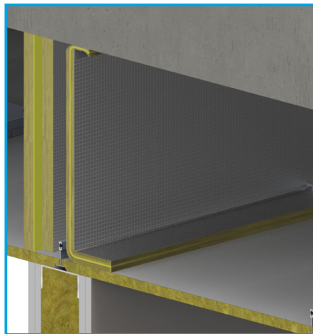


Fig 4. Twin barrier using CVB & CBX

## Raised access floor voids

As with suspended ceiling voids, raised access floor voids also offer a potential cross-talk sound path between adjoining rooms (see Fig 5).

However, as a result of their higher surface mass and normal lack of open penetrations, they inherently provide for a higher starting room-to-room sound transmission loss. Typically an installed access floor will offer a room-to-room value of circa 40dB ( $D_{ntw}$ ). This level of performance is achieved without the presence of any vertical barrier within the floor void.

The installation of **SIDERISE CVB** acoustic void barriers will significantly further improve the room-to-room sound transmission loss. The upper achievable value will in all probability become limited by structure borne flanking transmission.

Given the normal start level of sound transmission loss, the need to incorporate higher performance **SIDERISE CVB** acoustic barrier arrangements is relatively unusual. This requirement is typically limited to conditions where significant penetrations to the floor are present, e.g. certain types of perimeter heating troughs or diffuser grills to a common supply air floor plenum.

As for ceiling voids, **SIDERISE CVB** is also usually retained by means of a vertical compression fit. This is normally achieved by free-standing an oversized **SIDERISE CVB** barrier on the structural floor. The access floor tiles are then fixed down to create the necessary vertical compression. For larger voids the stability of the barrier can be enhanced by the use of **SIDERISE support brackets** (see Fig 6). The brackets are reversed alternately and are usually used at a rate of 3 per 1200mm length.

Service penetrations are dealt with in the same manner as described in ceiling void applications. Vertical interlocking joints and any cut joints should be sealed on both sides with a minimum 50mm wide self-adhesive foil tape.

Certain grades of **SIDERISE CVB** have been tested for suitability in air plenum conditions. Measured air leakage was found to be within known guidelines for pressures up to 250Pa.

For further details including **SIDERISE foil tape** specifications please contact our Interiors technical team.

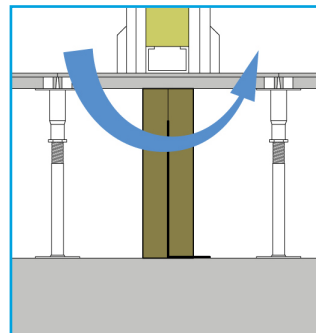


Fig 5. Access floor void cross-talk path

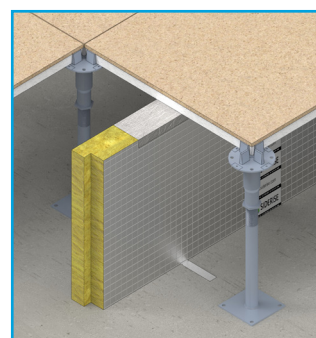


Fig 6. CVB with added stabilising brackets

## Technical specification

### SIDERISE CVB acoustic void barriers for suspended ceilings

<b>Form supplied (mm)</b>	1200 x 1200; 1200 x 1000 or 1200 x 900 (according to grade)
<b>Colour</b>	Silver (Matt black and other coloured facing options available)
<b>Finish</b>	Aluminium foil
<b>Cover size</b>	As above -25mm for selected dimension with rebates
<b>Special sizes/shapes</b>	Available on request
<b>Thickness (mm)</b>	Normally 50 - 150
<b>Surface weight (kg/m<sup>2</sup>)</b>	3 - 17 8 - 27 (including central mass membrane)
<b>Fire performance</b>	BS 476, Part 7: Class 1 BS 476, Part 6: I<12, I <sub>(1)</sub> <6 (Class 'O' to Building Regulations)
<b>Fire resistance</b>	30 mins & 1 hour (for certain grades only refer to our technical department)



## Further information

### PRODUCTS AVAILABLE

The following SIDERISE products for use in suspended ceiling voids are available and can also be specified using NBSPlus:

- SIDERISE CVB (CVB/LAM, CVB/P) acoustic void barriers
- SIDERISE FLX flexible acoustic barriers
- SIDERISE CBX flexible acoustic barriers
- SIDERISE SC cavity barriers and fire stops
- SIDERISE AVC acoustic void closures for tops of walls
- SIDERISE TW fire stops for profiled decks
- SIDERISE foil tape: FT 120/45

Contact us for a copy of our SIDERISE ceiling void barrier range brochure.

### AVAILABLE CPDS

Contact SIDERISE for further information on our CPDs:

- SIDERISE CVB range: Use and Specification for the Suspended Ceilings Industry
- SIDERISE raised access floor acoustics & installation
- SIDERISE Acoustic Products & Performance - Information for Noise Consultants

## Technical & sales support

### SALES SUPPORT

#### Internal Sales Team

T: +44 (0) 1656 730833

E: sales@siderise.com

#### Andrew Stanley

National Accounts Manager - Interiors UK

M: +44 (0) 7770 533759

E: andrew.stanley@siderise.com

### TECHNICAL SUPPORT

#### Mike Carrick AMIOA

Technical Officer - Construction Acoustics

M: +44 (0) 7917 327797

E: mike.carrick@siderise.com

#### Chris Mort

Technical Officer - Fire

M: +44 (0) 7778 691510

E: chris.mort@siderise.com

### SITE SUPPORT

#### Barnaby Carrick

Technical Applications Engineer

M: +44 (0) 7467 955120

E: barnaby.carrick@siderise.com



### SIDERISE GROUP

Forge Industrial Estate,  
Maesteg, UK, CF34 0AY

T: +44 (0)1656 730833

F: +44 (0)1656 812509

E: interiors@siderise.com

W: [www.siderise.com](http://www.siderise.com)

